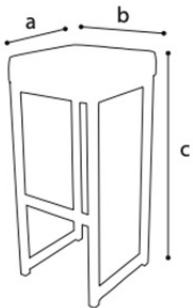


# Sgabello KUBO

Powder-coated steel stackable barstool  
 with removeable seat



## Dimensions



a 35 cm  
 b 35 cm  
 c 79 cm

## Features

- ✓ Aluminium footrest fixed with 2 screws
- ✓ Protecting U-profile in RVS 304
- ✓ Indoor
- ✓ Stackable 8 pcs: stack / 25pcs in trolley
- ✓ Interchangeable seats

## Frame

- ✓ Steel 2 mm
- ✓ Tube size 30 x 30 mm
- ✓ Coating powdercoating white or black

## Certificates

- ✓ Linen fabric: EN ISO 12947-2:1998, Martindale
- ✓ Faux leather: EN ISO 12947-2:1998, Martindale
- ✓ Sunbrella: NF EN ISO 105 B02/B04 colour fastness & bad weather conditions

## Colours



White



Black

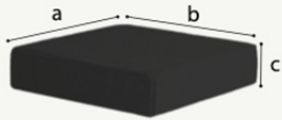
## Seats

### Bamboo



- ✓ Material **Bamboo**  
 Bamboo is 27% stronger than oak and 50% more water-resistant  
 Insect- and mould resistant, no knots
- ✓ Surface **Naturel (optional lacquer coating)**
- ✓ Dimensions **350x350x20mm**
- ✓ Indoor use

Fabric



✓ Dimensions

Linen a 35 cm - b 35 cm - 8 cm  
 Hardcore a 35 cm - b 35 cm - 1,2 cm  
 Bamboo a 35 cm - b 35 cm - 2 cm

✓ Material

Linen indoor  
 Faux leather indoor  
 Bamboo indoor  
 Hardcore in- & outdoor  
 Sunbrella in- & outdoor

✓ Features

EZY DRY FOAM: does not absorb water,  
 for outdoor use, for outdoor cushions

Linen



anthracite



blue



lime



red



black

Faux leather



white



black

Sunbrella Solids & Stripes fabrics for outdoor use



arbor  
pebble



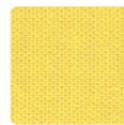
ardoise



black



lead  
chine



lemon



lime



logo



macao



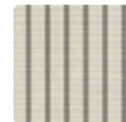
navy  
blue



polar  
blue

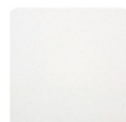


riviera  
white  
paon



riviera  
white  
taupe

Faux leather



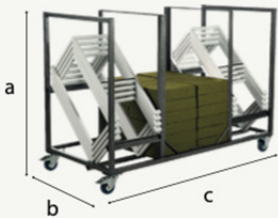
white



black

## Trolleys

### Trolley Kubo Smart Bar



- ✓ Material
- ✓ Coating
- ✓ Dimensions
- ✓ Features

Steel  
 Hammerscale grey coating  
 a 116 - b 78 - c 161 cm  
 Stores 50 bar stools + seats  
 Fitted with vulcanised wheels, 125 mm dia  
 2 braked swing-wheels + 2 fixed wheels  
 3 functions: transportation - storage - protection

### Trolley Kubo 25 pcs.



- ✓ Material
- ✓ Coating
- ✓ Dimensions
- ✓ Features

Steel  
 Hammerscale grey coating  
 a 166 - b 78 - c 81,5 cm  
 Stores 25 bar stools + seats  
 Fitted with vulcanised wheels, 125 mm dia  
 2 braked swing-wheels + 2 fixed wheels  
 3 functions: transportation - storage - protection